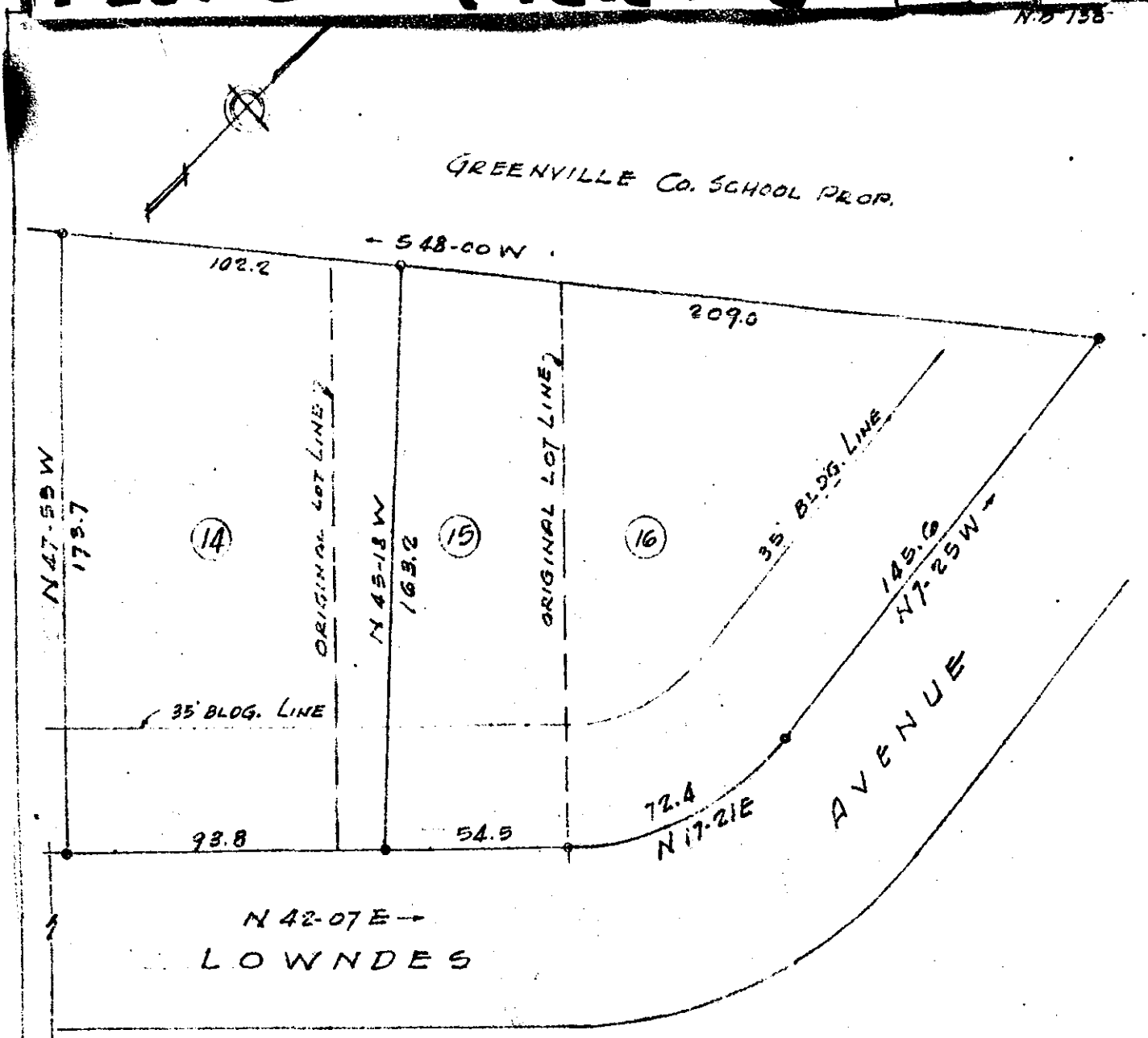


Plat Book-RR-Page 28 A

N. 2 158



FILED
GREENVILLE CO. S. C.
APR 21 2 23 PM 1960
OLLIE FARMER WORTH
R. M. C.

PROPERTY OF
ANALANE C. GIBSON

GREENVILLE, S. C.
SCALE 1"=40' APR. 12, 1960

509 28891 APR 21 1960

NOTE-
LOTS SHOWN HEREON ARE REVISION
OF ORIGINAL LOTS 14, 15 & 16
SECTION 'B' ELLETSON ACRES

RR-28

c.c. Jones - Civil Engineer

28891, Filed This 21st Day of April 1960
And Recorded in Vol. RR-28
Ollie Farmer Worth
Register Meigs County, Meigs County, S. C.